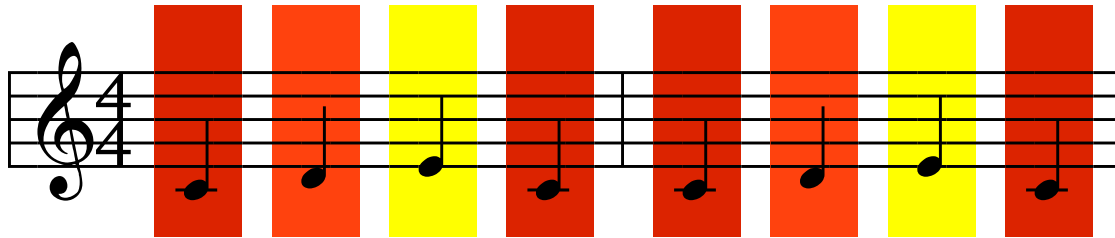


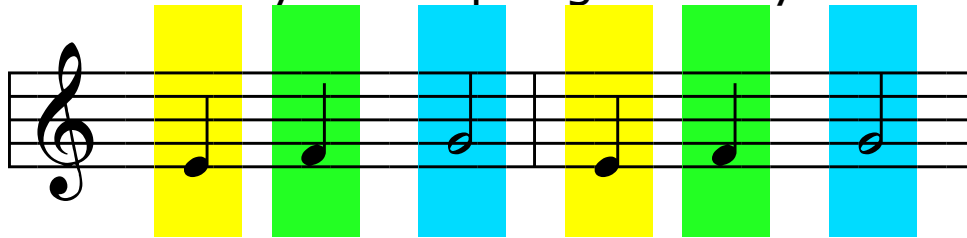


Are You Sleeping?

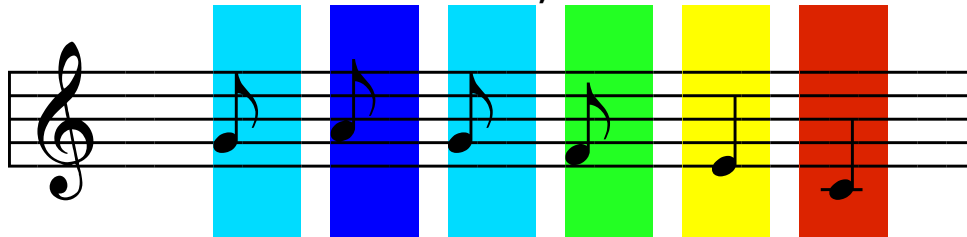
Traditional



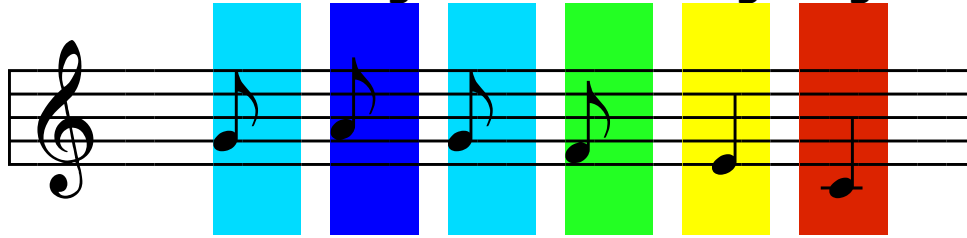
Are you sleep-ing? Are you sleep-ing,



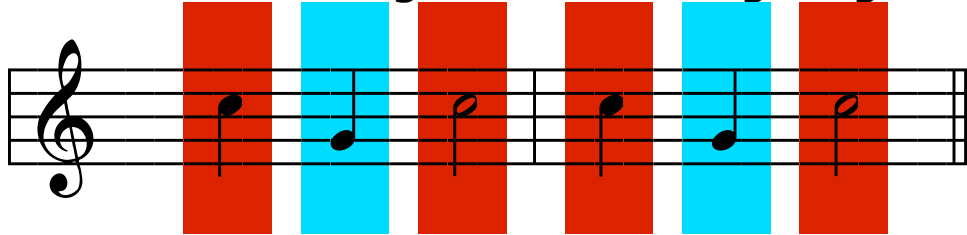
Bro-ther John, Bro-ther John?



Morn-ing bells are ring-ing.



Morn-ing bells are ring-ing:



din din don din din don



Are You Sleeping? p.2



Are you sleep-ing? Are you sleep-ing,

Bro-ther John, Bro-ther John?

Morning bells are ring- ing. Morning bells are ring- ing.



Are You Sleeping? p.3



Musical notation for the first system of 'Are You Sleeping?'. The first staff shows a treble clef with a melody of quarter notes: G4, A4, B4, G4, F4, E4. The notes are grouped into three pairs, each with a colored vertical bar behind it: red for the first pair (G, A), cyan for the second pair (B, G), and red for the third pair (F, E). The lyrics 'din din don' are written below the notes. The second staff shows a treble clef with a melody of eighth notes: G4, A4, B4, G4, F4, E4, D4, C4. The notes are grouped into three pairs, each with a colored vertical bar behind it: cyan for the first pair (G, A), blue for the second pair (B, G), and green for the third pair (F, E). The lyrics 'din din don' are written above the notes. The final note is a red bar.

Musical notation for the second system of 'Are You Sleeping?'. The staff shows a treble clef with a 4/4 time signature. The first measure contains a whole rest, and the second measure also contains a whole rest. The staff ends with a double bar line.

Musical notation for the third system of 'Are You Sleeping?'. The staff shows a treble clef with a melody of quarter notes: G4, A4, B4, G4, F4, E4. The notes are grouped into three pairs, each with a colored vertical bar behind it: red for the first pair (G, A), cyan for the second pair (B, G), and red for the third pair (F, E). The staff ends with a double bar line.