

# My Faith Looks up to Thee

*Words: Ray Palmer, 1830*

*Music: Lowell Mason, 1830*

adapted for one octave  
diatonic handbells

by



This work was created for [www.TheInspiredInstructor.com](http://www.TheInspiredInstructor.com) and is licensed under a Creative Commons Attribution-Noncommercial-Share Alike 3.0 United States License. Permissions beyond the scope of this license may be available at [info@TheInspiredInstructor.com](mailto:info@TheInspiredInstructor.com).



# My Faith Looks up to Thee

KidsPlay™ Bells Needed:

C, D, E, F, G, A, B, C

*Includes eighth, quarter, dotted quarter, half, and whole notes*



# Get the Rhythm!



# Counting $\frac{4}{4}$ Time with Dotted Notes



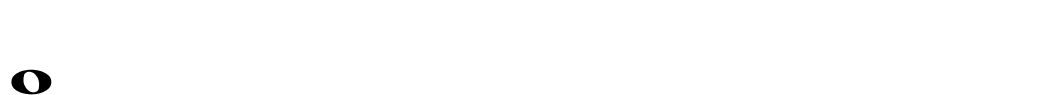
1 half 2 half 3 half 4 half



1 half 2 half 3 half 4 half



1 half 2 half 3 half 4 half



1 half 2 half 3 half 4 half





4  
4

# My Faith Looks up to Thee

My faith looks up to Thee,

Thou Lamb of Cal-va-ry,

Sa-vior di-vine!

Now hear me while I pray,



4  
4

# My Faith Looks up to Thee

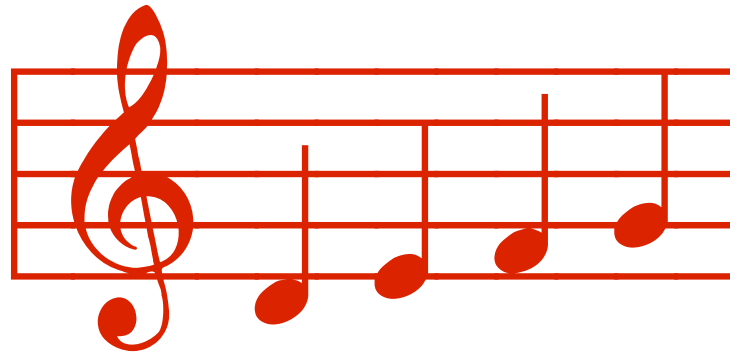
take all my guilt a-way,

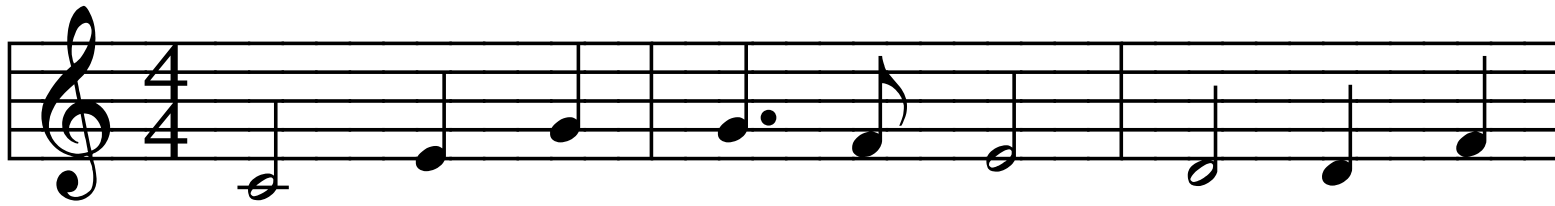
O let me from this day be

wholly Thine!



# Add the Tune!



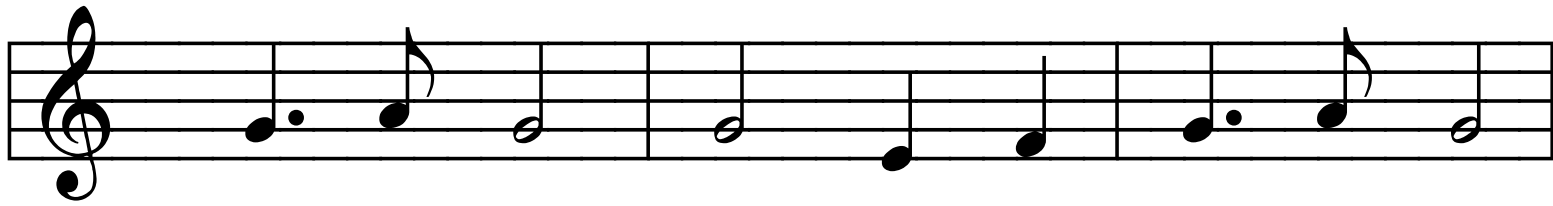


My faith looks up to Thee, Thou Lamb of

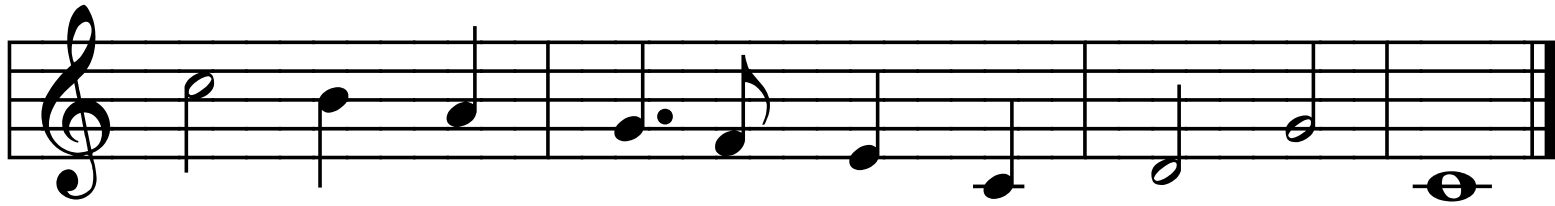


Cal-va-ry, Sa-rior di-vine! Now hear me





while I pray, take all my guilt a- way,



O let me from this day be whol- ly Thine!



Play the Melody!





My faith looks up to Thee, Thou Lamb of

Cal-va- ry, Sa- vi- or di- vine! Now hear me



while I pray, take all my guilt a- way,

Detailed description: This musical staff contains nine notes. The notes are: a dotted quarter note on G4 (teal bar), a quarter note on A4 (dark blue bar), a quarter note on B4 (teal bar), a quarter note on C5 (teal bar), a quarter note on D5 (yellow bar), a quarter note on E5 (green bar), a dotted quarter note on F5 (teal bar), a quarter note on G5 (dark blue bar), and a quarter note on A5 (teal bar).

O let me from this day be whol- ly Thine!

Detailed description: This musical staff contains nine notes. The notes are: a quarter note on G4 (red bar), a quarter note on A4 (purple bar), a quarter note on B4 (dark blue bar), a dotted quarter note on C5 (teal bar), a quarter note on D5 (green bar), a quarter note on E5 (yellow bar), a quarter note on F5 (red bar), a quarter note on G5 (orange bar), and a half note on A5 (teal bar). The words 'whol-' and 'ly' are underlined with red wavy lines.



Presentation by  
Heidi Schmidt

© 2016 TheInspiredInstructor.com

For more free music presentations, visit  
TheInspiredInstructor.com

[www.fontspace.com/robert-allgeyer/musiqwik](http://www.fontspace.com/robert-allgeyer/musiqwik)

[www.fontspace.com/ryan-neaveill/music-fun](http://www.fontspace.com/ryan-neaveill/music-fun)

[www.grsites.com](http://www.grsites.com) - Absolute Backgrounds

[www.OpenOffice.org](http://www.OpenOffice.org)

[www.anvilstudio.com](http://www.anvilstudio.com)