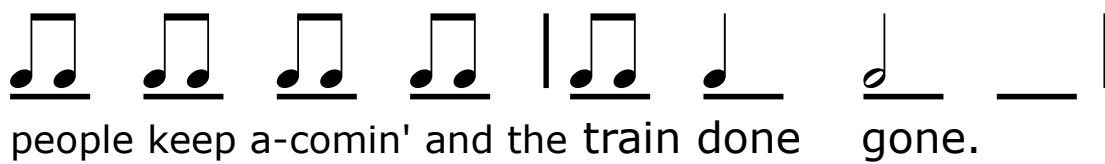
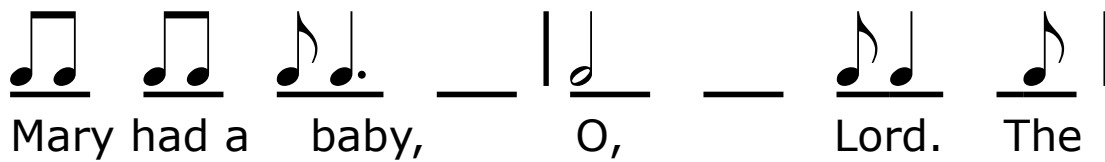
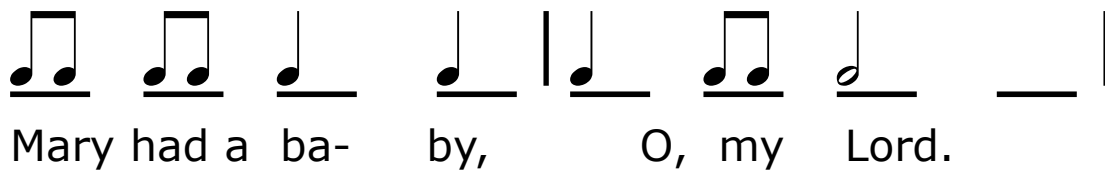
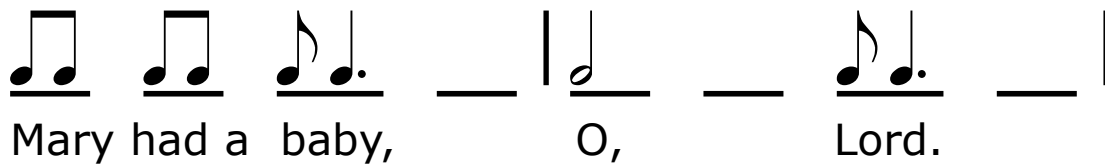


Mary Had a Baby



Mary Had a Baby

The image shows the musical notation for the song 'Mary Had a Baby' on a four-line staff. The notation is as follows:

- Line 1: Quarter note G4, quarter note A4, quarter note B4 with a dot, followed by a whole rest. A bar line follows. Then a half note G4, followed by a whole rest, a quarter note A4 with a dot, followed by a whole rest, and a bar line.
- Line 2: Quarter note G4, quarter note A4, quarter note B4, quarter note C5, bar line, quarter note G4, quarter note A4, quarter note B4, quarter note C5, quarter note B4, quarter note A4, quarter note G4, followed by a whole rest and a bar line.
- Line 3: Quarter note G4, quarter note A4, quarter note B4 with a dot, followed by a whole rest. A bar line follows. Then a half note G4, followed by a whole rest, a quarter note A4 with a dot, followed by a whole rest, a quarter note B4 with a dot, followed by a whole rest, and a bar line.
- Line 4: Quarter note G4, quarter note A4, quarter note B4, quarter note C5, bar line, quarter note G4, quarter note A4, quarter note B4, quarter note C5, quarter note B4, quarter note A4, quarter note G4, followed by a whole rest and a bar line.

