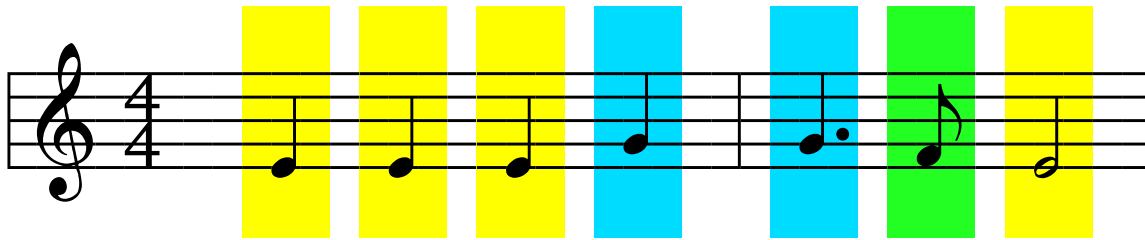


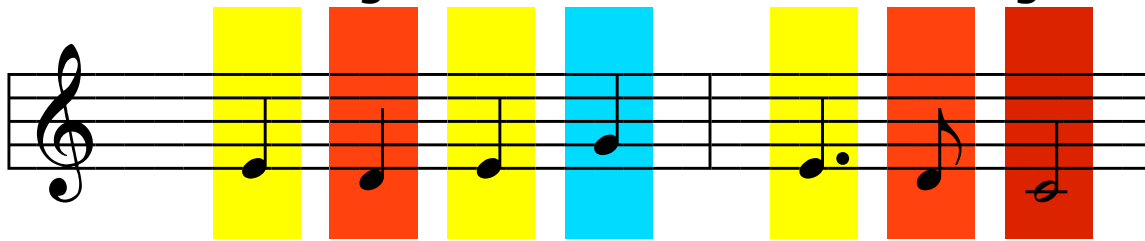


# Angels We Have Heard on High

Traditional French Carol



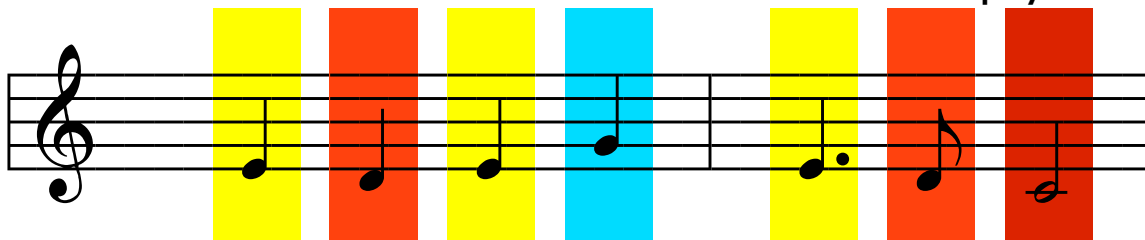
An- gels we have heard on high



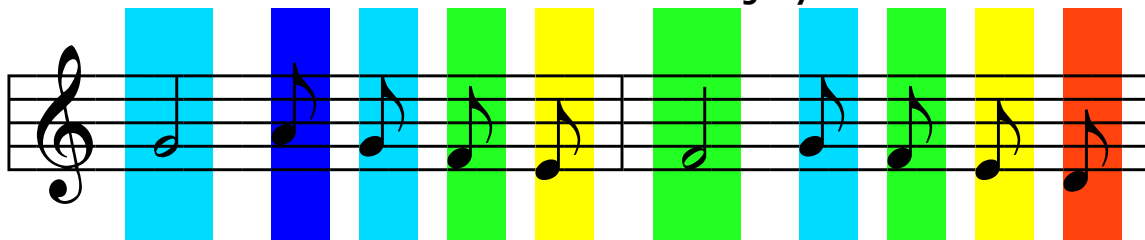
sweetly sing- ing o'er the plain.



And the mountains in re- ply



Echo back their joy- ous strain.



Glo - \_\_\_\_\_



# Angels We Have Heard on High, p.2



o- \_\_\_\_\_ ri- a

in ex- cel- sis De- o

Glo - \_\_\_\_\_

o- \_\_\_\_\_ ri- a

in ex- cel- sis De- \_\_\_\_\_ o



# Angels We Have Heard on High, p.3

A musical staff in 4/4 time with a treble clef. It contains seven notes: a quarter note on G4, a quarter note on A4, a quarter note on B4, a quarter note on C5, a dotted quarter note on B4, an eighth note on A4, and a half note on G4. Each note is positioned on a colored background: yellow, yellow, yellow, blue, blue, green, and yellow.

An- gels we have heard on high

A musical staff in 4/4 time with a treble clef. It contains seven notes: a quarter note on G4, a quarter note on A4, a quarter note on B4, a quarter note on C5, a dotted quarter note on B4, an eighth note on A4, and a half note on G4. Each note is positioned on a red background.

A musical staff in 4/4 time with a treble clef. It contains seven notes: a quarter note on G4, a quarter note on A4, a quarter note on B4, a quarter note on C5, a dotted quarter note on B4, an eighth note on A4, and a half note on G4. Each note is positioned on a colored background: yellow, red, yellow, blue, yellow, red, and red.

sweetly sing- ing o'er the plain.

A musical staff in 4/4 time with a treble clef. It contains seven notes: a quarter note on G4, a quarter note on A4, a quarter note on B4, a quarter note on C5, a dotted quarter note on B4, an eighth note on A4, and a half note on G4. Each note is positioned on a red background.

A musical staff in 4/4 time with a treble clef. It contains seven notes: a quarter note on G4, a quarter note on A4, a quarter note on B4, a quarter note on C5, a dotted quarter note on B4, an eighth note on A4, and a half note on G4. Each note is positioned on a colored background: yellow, yellow, yellow, blue, blue, green, and yellow.

And the mountains in re- ply

A musical staff in 4/4 time with a treble clef. It contains seven notes: a quarter note on G4, a quarter note on A4, a quarter note on B4, a quarter note on C5, a dotted quarter note on B4, an eighth note on A4, and a half note on G4. Each note is positioned on a red background.



# Angels We Have Heard on High, p.4

Echo back their joy-ous strain.

Glo - o- ri - a



# Angels We Have Heard on High, p.5

in ex-cel-sis De-o

Glo-ri-a



**Angels We Have Heard on High, p.6**



in ex-cel-sis De-\_\_\_\_ o